

# SECURITY CAGES

## T1A WILL PROVIDE THE FOLLOWING

- Security cage - weight 90 kg (W120 x D80 x H187 cm)
- Recycled paper for wrapping
- Strips for locking
- Black plastic cover for wrapping
- Optional: Bubble wrap for screens (Request before we ship the cage)

 Maximum weight capacity is 500 kg

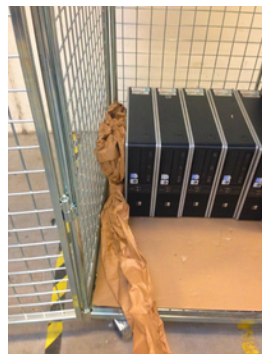


## HOW TO PACK LAPTOPS AND DESKTOPS



Laptops and desktops must be packed as shown.

NOTE: Make sure the heaviest equipment is packed at the bottom. All printers and desktops should be placed on the bottom shelf.



The recycled paper should be placed in the peripheral areas in order to protect the devices during transportation.



Batteries **MUST** be contained inside the machines when transported. Swollen or non-functioning batteries are not allowed to be part of the shipment. Please remove before shipping.

## HOW TO PACK MONITORS



Place the monitors with the screens facing each other. Secure the corners of the cage and make sure there is no empty space.

NOTE: In case of mixed equipment, always place heavier equipment at the bottom shelves of the cage.



If you need extra bubble wrap/recycled paper ask us to supply it before we send the cage.

# HOW TO PACK PERIPHERALS

## PERIPHERALS COULD BE:

Cables

Docking stations

Network equipment

Keyboard, mice etc.



T1A does not provide boxes for peripherals. These and other packing material can be requested.

Place the peripherals in the boxes as shown.

NOTE: The peripherals must be sorted and packed separately.

## LOCKING THE CAGE



### MAKE SURE:

- Not to overload the cage (Max. 500 kg)
- There is no free space between the devices.
- The equipment stays stable.
- To lock the cage with the supplied strip.

NOTE: Please do not open or remove the blue plastic pocket.

## PREPARE CAGE FOR SHIPMENT



Isolate the cage with the black protective cover .

Attach the KO-number and the UN3481 Caution sign on all sides



Download the sign here

